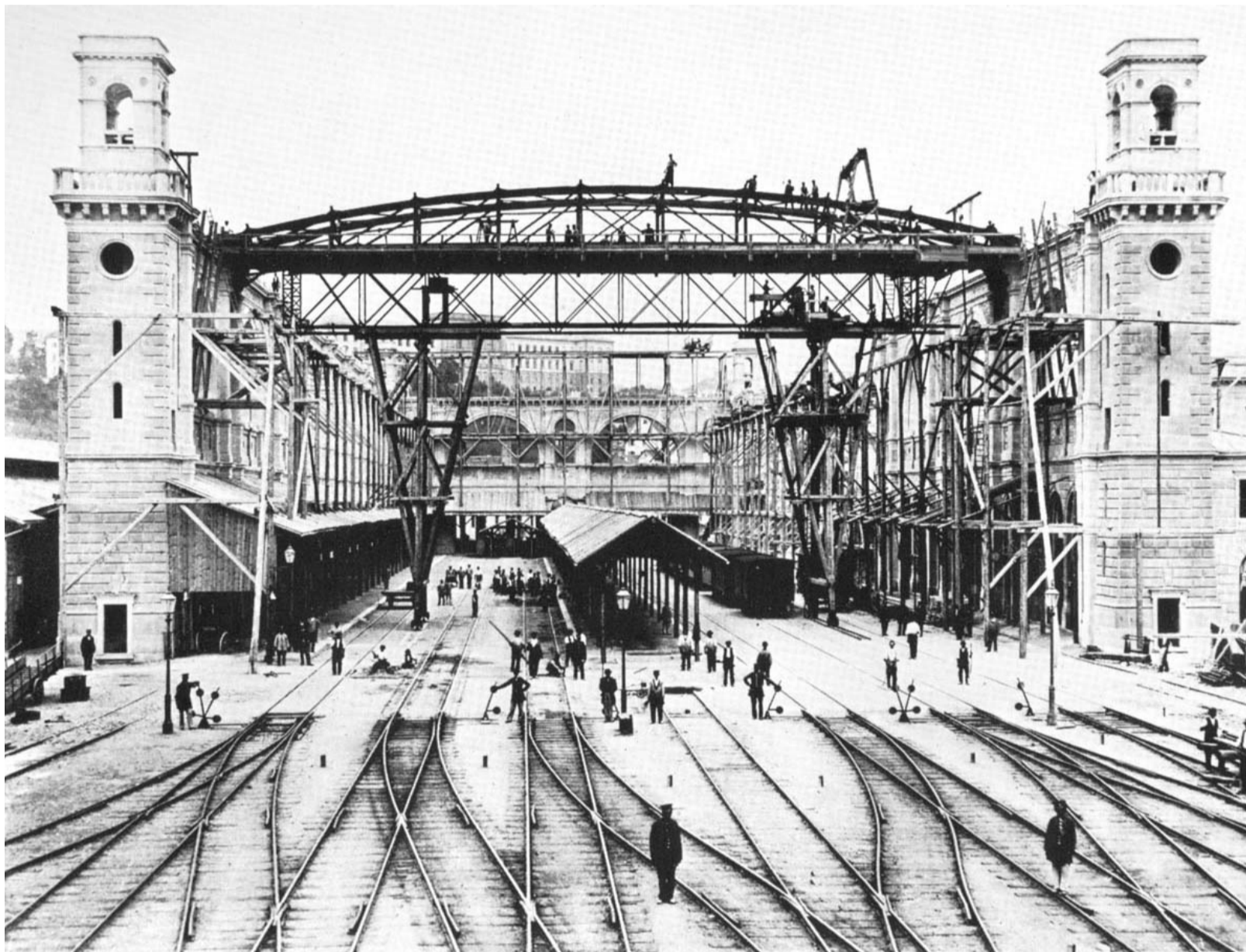


STANDARDS



Construction of Zurich's train shed in 1870

Railway tracks have a standard gauge. Without it, trains could not carry us across a continent (with some notable exceptions). In the track-field that winds like a river into Zurich's Hauptbahnhof, one finds this standardisation surrounded by the fluid, irregular and specific.

Today, architecture is increasingly standardised by the product catalogues of manufacturers and tightening regulation. Even landscape is subject to standardisation, at least since the beginning of industrial agriculture. Meanwhile nature continues to evolve its own standards for survival and proliferation, but these are mostly invisible. We shall extend the studies of standards into the heart of contemporary architecture.

Construction and materiality will remain the driving forces in our design studio, but standards will be used to reveal compliance or deviation from social or architectural norms.

For more Information, please visit the Studio Tom Emerson website.